



R29 installation manual

Support: P: 646 228 6341
E: support@whoo.ai

Preparation

• Mainframe accessories:



• Wall Mounting accessories



• Flush mounting accessories

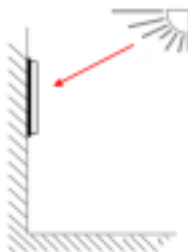


• Plasterboard mounting installation accessories



Installation warning:

Do not install R29 under direct sunlight where it can become damaged by high temperatures.

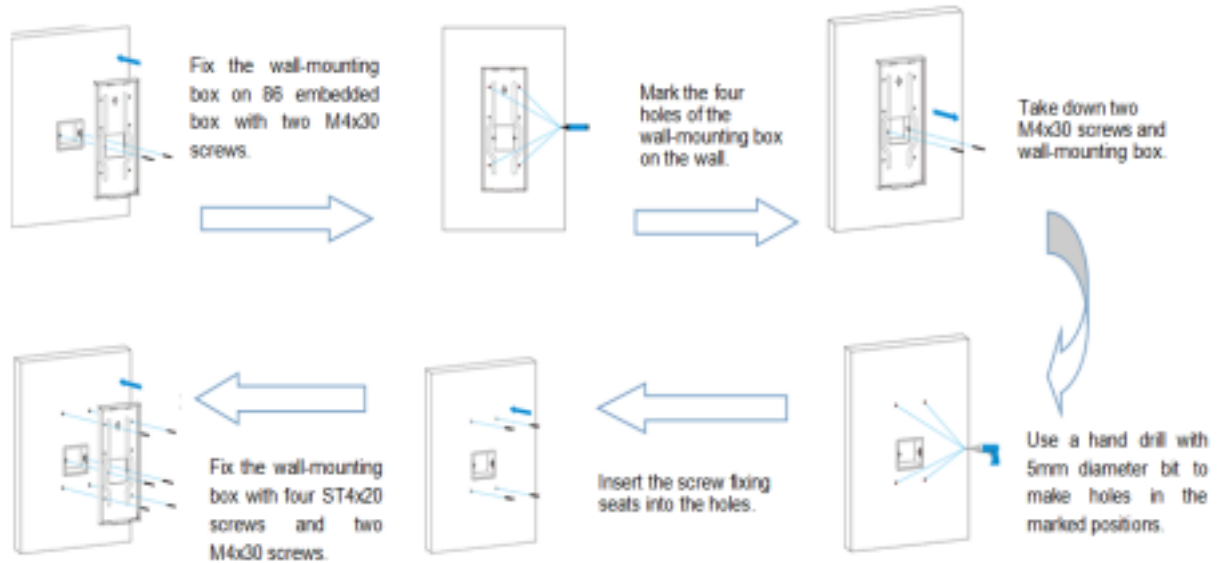


Installation

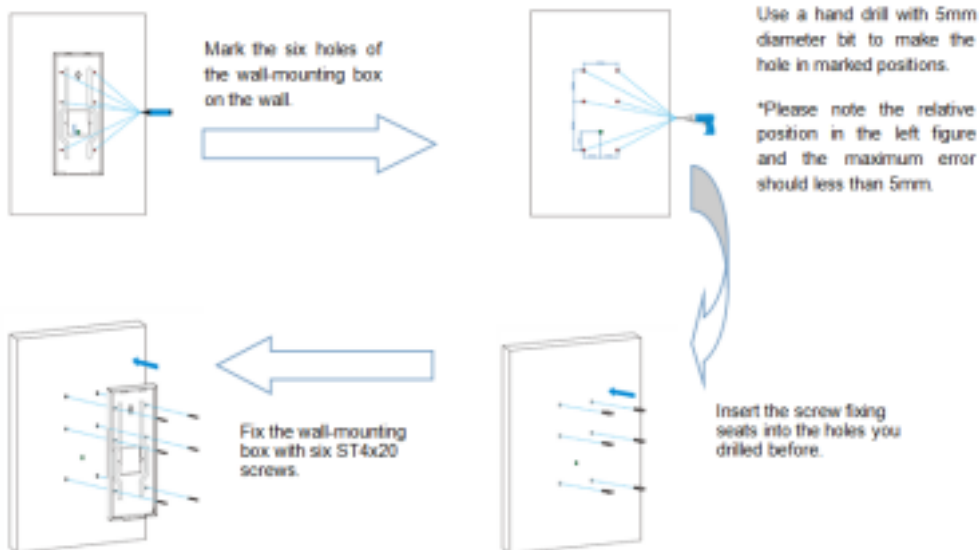
Bracket/Box installation

1. Wall mounting

With 86 embedded box in the wall:

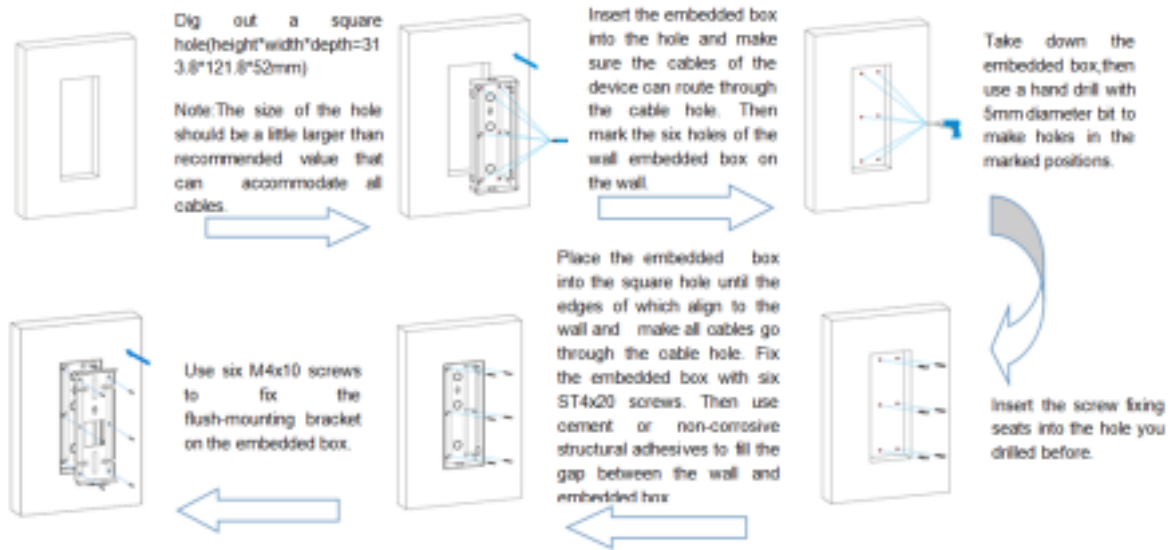


Without 86 embedded box in the wall:

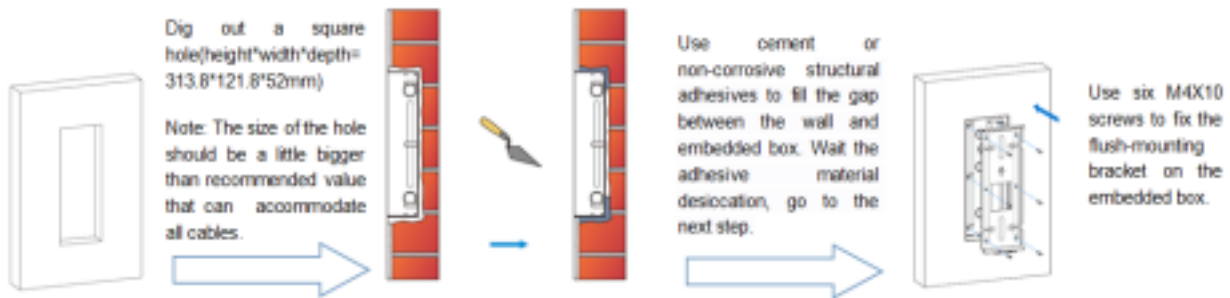


2. Flush mounting

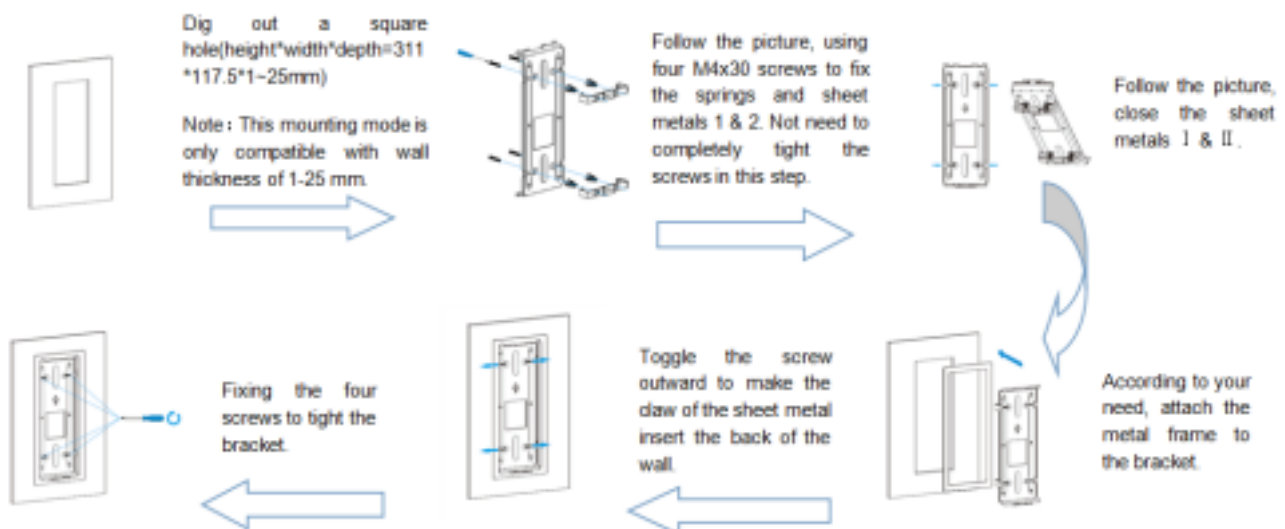
Normal installation:



Or you can choose another simple method without fixing ST4x20 screws:



3. Plasterboard mounting



Back cover installation



For convenient wiring, hang R29X on the wall-mounting box/flush-mounting bracket with rope. Then insert the silicon rubber sealing ring into the groove.

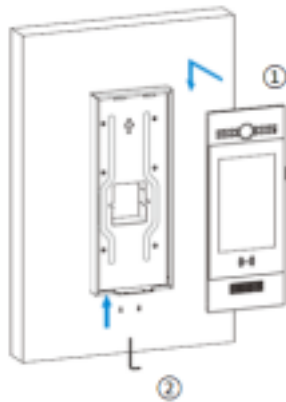


Make cables go through the back cover, connecting to the corresponding interfaces of the main board. Choose a suitable size rubber plug to compress cables, then fasten the locking cable plate with two ST1.7x4 screws.

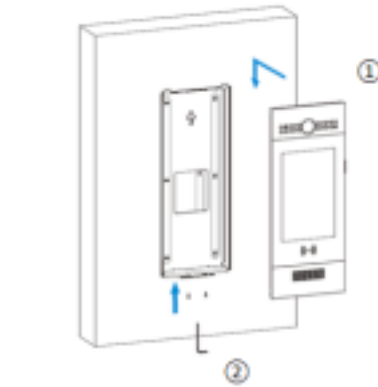


Use four M3x5 screws to fix the back cover.

Device mounting



Wall Mounting



Flush Mounting & Plasterboard Mounting

1. Place the device into the wall-mounting box / flush-mounting bracket until the edges of which align to the wall. Then pull the device downward and ensure the groove of it hooks to the lock catches of the back box.

2. Use the Allen wrench to tighten the device with two M3x6 screws.

Mounting Instructions

We normally mount our units on the wall using a surface mount.



Occasionally, we use recessed mounting brackets (we have them for drywall and brick walls—please let us know if you need one).



Sometimes, when replacing an intercom, the previous unit may have left a hole that is too large for our device to cover. In these cases, we use an aluminum or stainless steel plate and/or PVC boards.



We typically use **Everbilt 8 x 16 Push Plates** because they have a nice finish and fit well around our units.

If we need something larger, we use **Everbilt 10 x 34 Door Kick Plates**.

NOTE: Cutting these kick plates can be tricky. Pay close attention to finishing the cut edges so that they are not sharp.